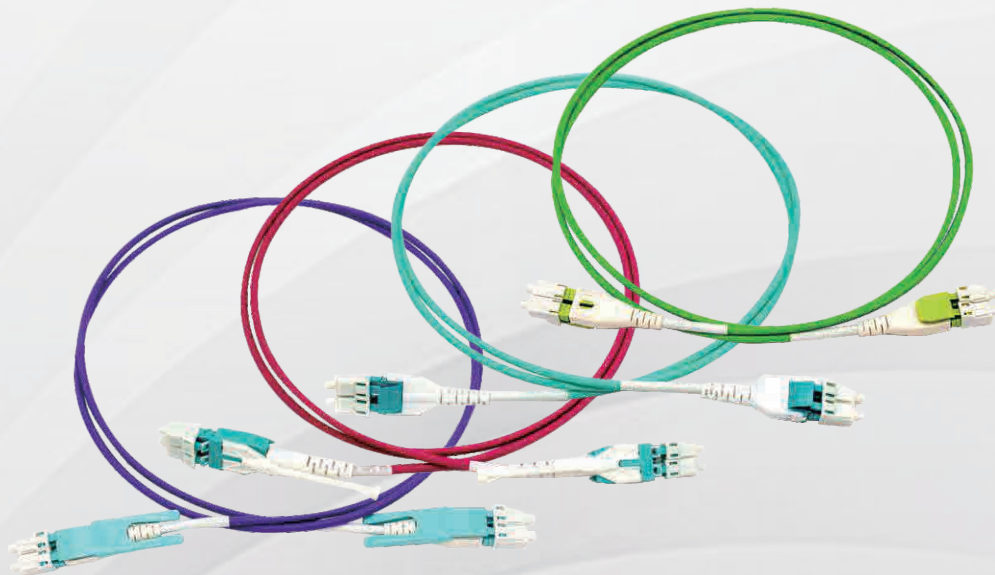


# PATCH CORD

LC UNIBOOT PATCHCORD



## Applications

- High Bandwidth Ethernet and Fibre Channel
- Storage Area Networks(SANS)
- Data Center
- CCTV and Security

## Features

- Meet the requirements of high-density applications
- Low loss optical performance to meet data center power budgets
- IEC, EIA/TIA or Telecordia compliant
- 100% optical inspection and testing
- Standard and Reduced Bend Sensitivity OM3, OM4 and OS2 Fiber types
- Available in different lengths and colors

## Construction

Items	Description
Connector Type	LC uniboot
Fiber Count	2 Fiber
Fiber Mode	Single mode: OS2 9/125 $\mu$ m Multimode: OM4 50/125 $\mu$ m, OM3 50/125 $\mu$ m
Branch Diameter	$\Phi$ 2.0mm , $\phi$ 3.0mm

## Optical performance (LC/SC/FC/ST/MU/SMA)

Type	Unit	Description			
Model	--	SM		MM	
Polish	(dB)	UPC	APC	UPC	PC
Insertion Loss	(dB)	$\leq 0.3$	$\leq 0.3$	$\leq 0.3$	$\leq 0.3$
Return Loss	(dB)	$\geq 50$	$\geq 60$	$\geq 30$	--
Cable Diameter	--	$\Phi$ 3.0, $\Phi$ 2.0			

## Geometry parameters

Type	Unit	Description	
		PC	APC
Radius of curvature	(mm)	7-25	5-12
Fiber Height	(nm)	-100 - +50	-100 - +50
Apex offset	(nm)	Max 50	Max 50
Angle(Degree)	( $^{\circ}$ )	—	$\pm 0.5$