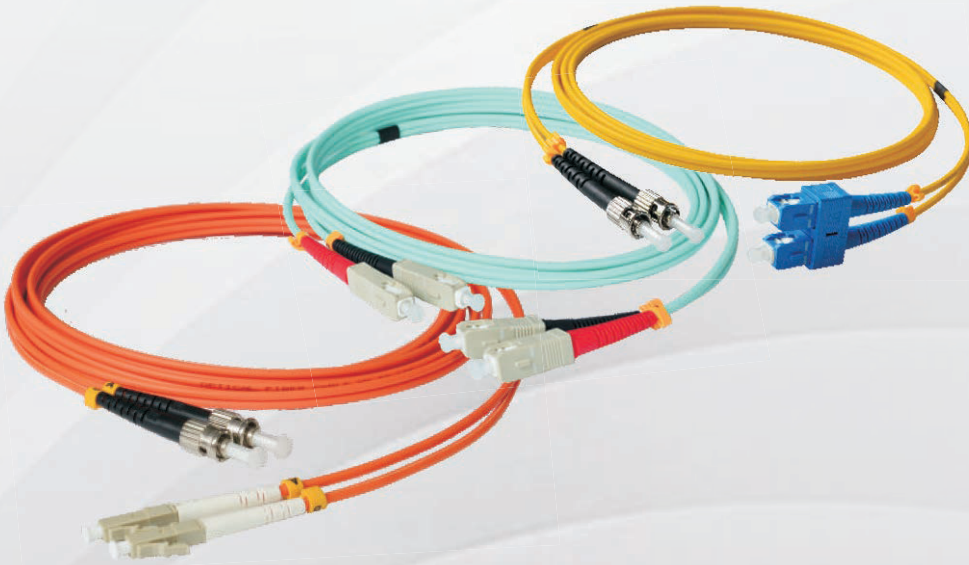


PATCH CORD

STANDARD PATCH CORD / PIGTAIL



Applications

- High Bandwidth Ethernet and Fibre Channel
- Storage Area Networks(SANS)
- Data Center
- CCTV and Security

Features

- Loss optical performance to meet data center power budgets
- IEC, EIA/TIA or Telecordia compliant
- 100% optical inspection and testing
- Standard and Reduced Bend Sensitivity OM3, OM4 and OS2 Fiber types
- Available in different lengths and colors

Construction

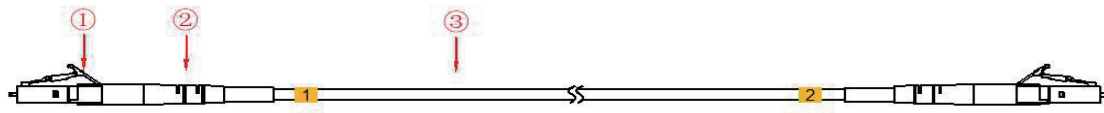
Items	Description
Connector Type	FC, SC, ST, MU, LC, E2000, /UPC,APC
Fiber Count	4, 6, 8, 12 & 24 Fiber
Fiber Mode	Single mode: OS2 9/125μm Multimode: OM4 50/125μm, OM3 50/125μm
Branch Diameter	Φ2.0mm , φ3.0mm

Optical performance (LC/SC/FC/ST/MU/SMA)

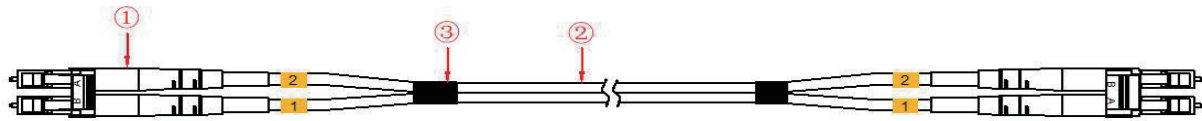
Type	Unit	Description			
Model	--	SM		MM	
Polish	(dB)	UPC	APC	UPC	PC
Insertion Loss	(dB)	≤0.3	≤0.3	≤0.3	≤0.3
Return Loss	(dB)	≥50	≥60	≥30	--
Cable Diameter	--	Φ3.0, Φ2.0, Φ0.9			

Type	Unit	Description			
		PC		APC	
		SC	MU/LC	SC	MU/LC
Radius of curvature	(mm)	10 - 25	7-25	5-12	
Fiber Height	(nm)	-100 - +50		-100 - +50	
Apex offset	(nm)	Max 50		Max 50	
Angle(Degree)	(°)	—		8±0.5	

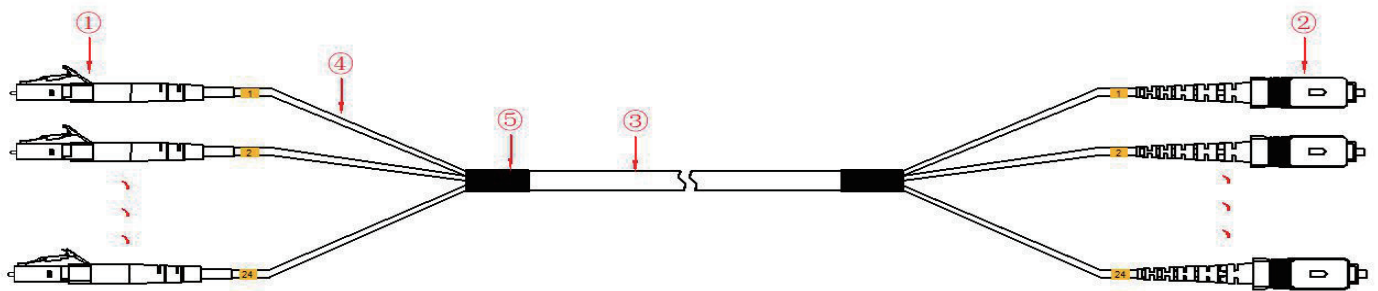
Technical Drawing



① LC SX Connector 2.0mm ② White Tail Set ③ Cable

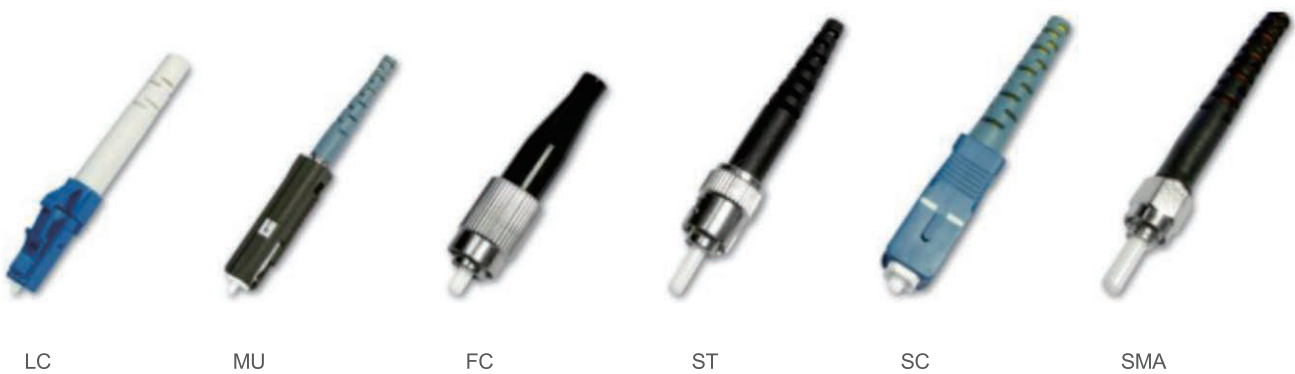


① LC SX Connector 2.0mm ② Cable ③ Heat Shrink



① LC Connector 2.0mm ② LC Connector 2.0mm ③ Cable ④ φ2.0mm Tube ⑤ Heat Shrink

Optic Fiber Connectors Guidance



LC

MU

FC

ST

SC

SMA

Optic Fiber Connectors Guidance



Simplex

Duplex

Distribution

Ribbon Cable

Butterfly Cable